

# Replacement Windows and Insulated Glass Units ... How Different Are They?

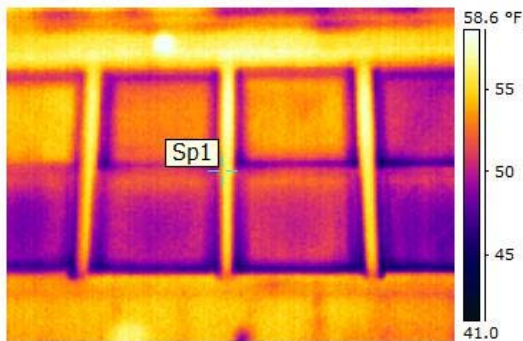


269-343-4550

Below are excerpts from a recent study on replacement windows and insulated glass units dated 12/15/06.

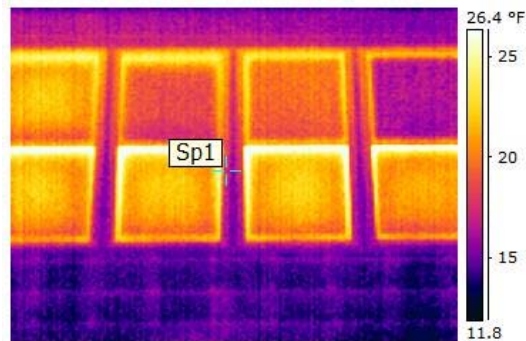
## “Polaris Ultimate and Supreme window glass packages with Super Spacer, outperform competitive insulating glass in every category.”

Glass in the upper sash of three windows has been replaced for this test. Infra-red building thermography shows the temperature differences of each IGU. The image color of the better insulating glass will look more like the color of the wall. Frames and sash of existing windows are foam filled commercial grade.



Interior Image

Interior view from left to right: #1, #2, #3, #4  
#1 Ultimate/ #2 Triple, low e, argon, intercept  
#3 Supreme / #4 Double, low e, argon (original).



Exterior Image

Exterior view from left to right: #4, #3, #2, #1  
Note: #3 Supreme, better than triple #2  
#1 Ultimate (far right), the best insulator.

**“The double pane Supreme with Super Spacer, by Polaris, outperforms the typical triple pane on the market. The Polaris Ultimate (triple pane) is the best insulating glass available.**

What do my windows look like?



Exterior view  
from left to right:

**Polaris UltraWeld DH  
Supreme w/Super  
Spacer**

**Double Pane PW  
circa 1960**

**Single Pane SH  
circa 1960**

Even the best window in most older homes (picture window), is a poor insulator against the elements. Consider not only replacing it, but any previously replaced “grade B” windows as well.